

Sinclair  Hammelton



OFFERS IN EXCESS OF

£550,000

Bradford Close

, BR2 8NR

PROPERTY SUMMARY

Sinclair Hammelton are proud to bring to the market this beautifully presented three bedroom semi-detached family home, located in a quiet residential close. Conveniently located with great transport links being close to local bus routes being well connected to Bromley South, Orpington and Petts Wood train stations and close to desired local schools. The ground floor comprises a welcoming porch, a bright entrance hallway, a cosy living room with a feature fireplace, a downstairs W/C, and a spacious open-plan kitchen, dining and living area with French doors leading out to a decked seating area. On the first floor, there are two double bedrooms with built-in storage, a single bedroom, and a modern family bathroom. Externally, the property boasts a private, low-maintenance rear garden with astroturf, a detached garage and a versatile garden room/ home office with power, heating and internet. To the front, there is a driveway providing off-street parking. Early viewing is highly recommended.

EPC: D
COUNCIL TAX - D
Construction - Traditional
Mains Services - Yes

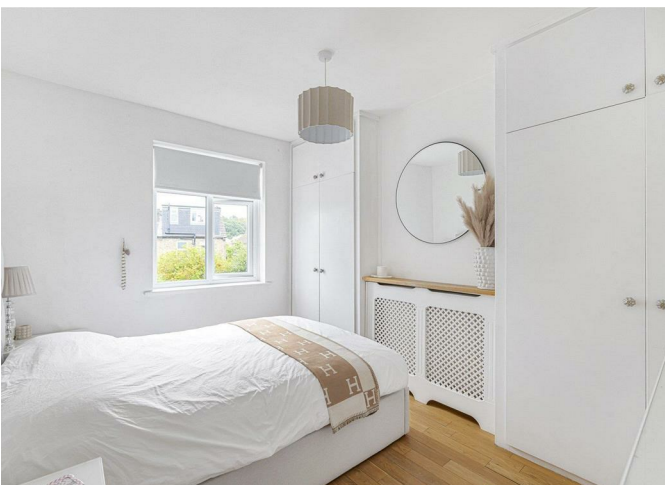
3



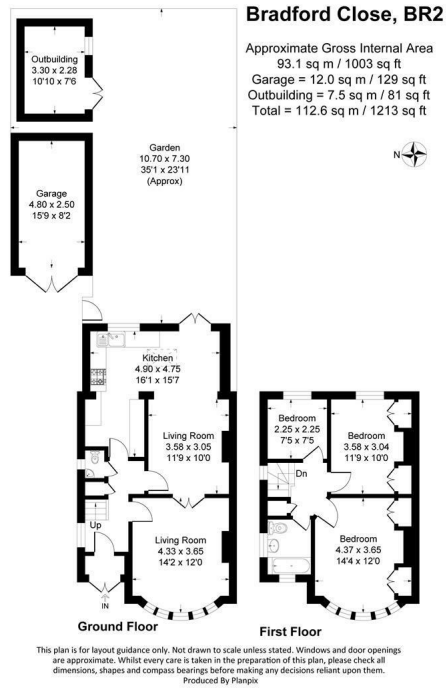
1



2







3
1
2

Energy Efficiency Rating		
	Current	Potential
Very energy efficient - lower running costs		
(92 plus) A		
(81-91) B		84
(69-80) C		
(55-68) D	62	
(39-54) E		
(21-38) F		
(1-20) G		
Not energy efficient - higher running costs		
England & Wales		EU Directive 2002/91/EC

EPC RATING: D COUNCIL TAX BAND:

Agents Note: Whilst every care has been taken to prepare these particulars, they are for guidance purposes only. All measurements are approximate and are for general guidance purposes only and whilst every care has been taken to ensure their accuracy, they should not be relied upon and potential buyers/tenants are advised to recheck the measurements

Sinclair Hammelton

OFFICE ADDRESS
 23 High Street
 Bromley
 Kent
 BR1 1LG

OFFICE DETAILS
 0208 464 5566
 info@sinclairhammelton.co.uk